



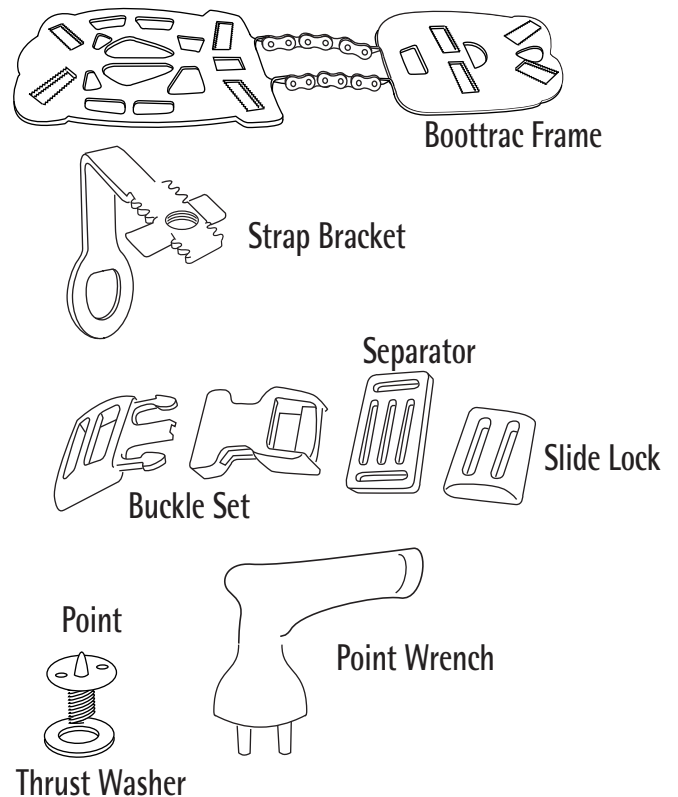
# Assembly Instructions and Warranty

## Getting Started: Boottrac Kit Selection

Make sure you have selected the correct Boottrac kit to fit your boots. Boottrac boxes are marked either, "A" Kit or "B" Kit. The "A" Kit should be used with hiking boots, work boots and stocking foot wader boots sizes 7 through 14. The "B" Kit will fit insulated and rubber boots as well as boot foot waders sizes 7 through 14. If you are unsure which Boottrac kit is best for you, ask your dealer or catalog specialist.

## Boottrac Components

Part:	Qty.
Left and Right Boottrac Frames	1ea.
"A" or "B" Strap Brackets (see above).	16
Toe Strap Kit:	2
<ul style="list-style-type: none"> <li>• 2 pieces of 5/8" Webbing</li> <li>• 4 Slide Locks</li> <li>• 1 Buckle Set</li> <li>• 1 Separator</li> </ul>	
Arch Strap Kit:	2
<ul style="list-style-type: none"> <li>• 2 pieces of 5/8" Webbing</li> <li>• 4 Slide Locks</li> <li>• 1 Buckle Set</li> </ul>	
Heel Strap Kit:	2
<ul style="list-style-type: none"> <li>• 2 pieces of 5/8" Webbing</li> <li>• 4 Slide Locks</li> <li>• 1 Buckle Set</li> <li>• Separator</li> </ul>	
Tungsten Points	36
Thrust Washers	36
Point Wrench	1



# Step 1: Assemble the Frame and Strap Brackets

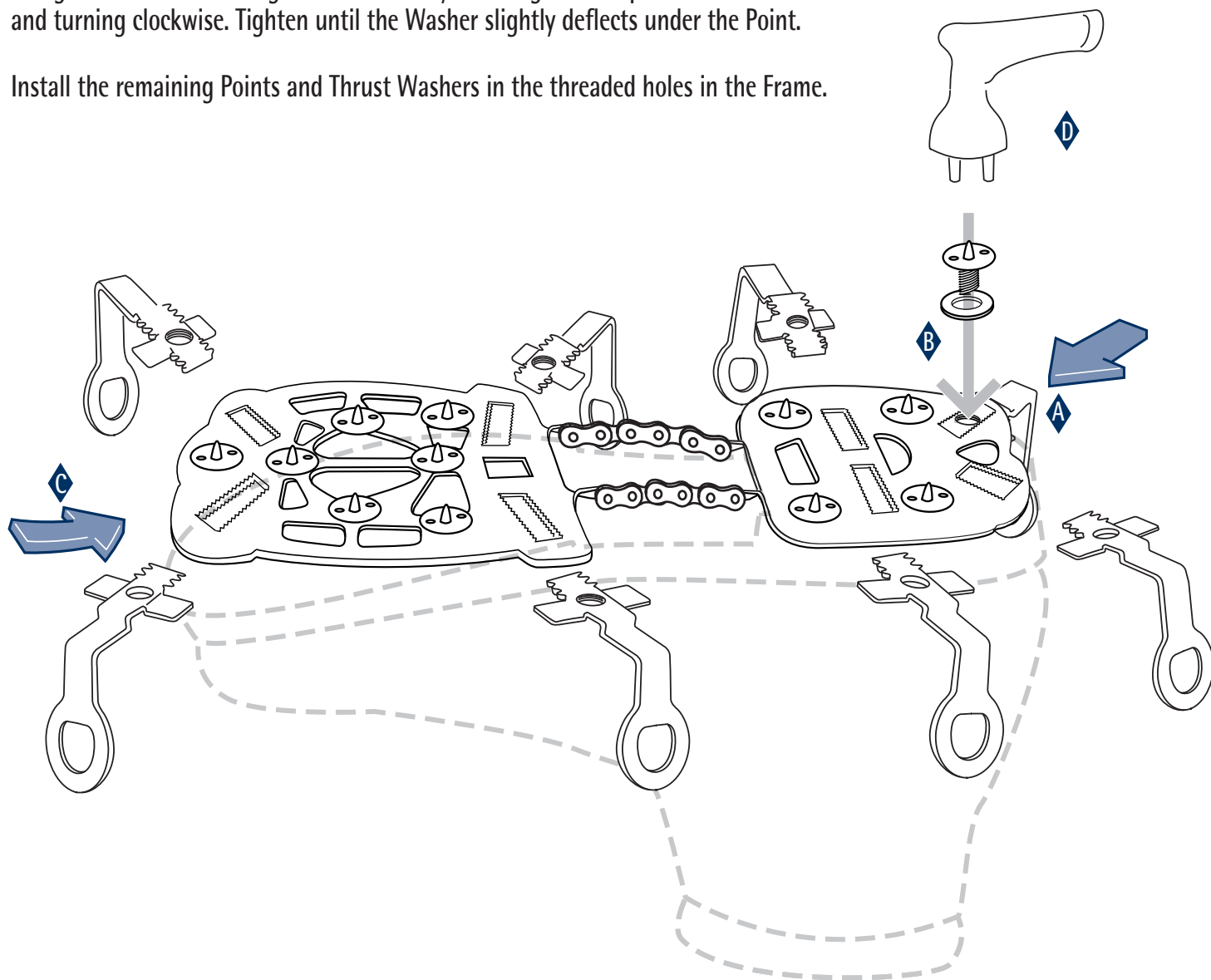
Center the Boottrac Frame over bottom of boot as shown. (Frames are marked Left "L" and Right "R")

- A** Install two Strap Brackets in the two heel slots. The Strap Brackets go between the Frame and the bottom of the boot. The notches in the Frame and Strap Brackets allow for adjustment.
- B** Secure the Strap Bracket by screwing a Thrust Washer and Point into the threaded hole in the bracket. Hand tighten until the Strap Bracket and Plate pull together.
- C** Using the same procedure, install the two toe Strap Brackets. Keeping the Frame centered, install the remaining Strap Brackets.

After all the Strap Brackets are installed, check the fit. The Boottrac should be snug to the boot but easy to remove.

- D** Using the Point Wrench, tighten all Points by inserting the two pins on the wrench into the two holes on the Point and turning clockwise. Tighten until the Washer slightly deflects under the Point.

Install the remaining Points and Thrust Washers in the threaded holes in the Frame.

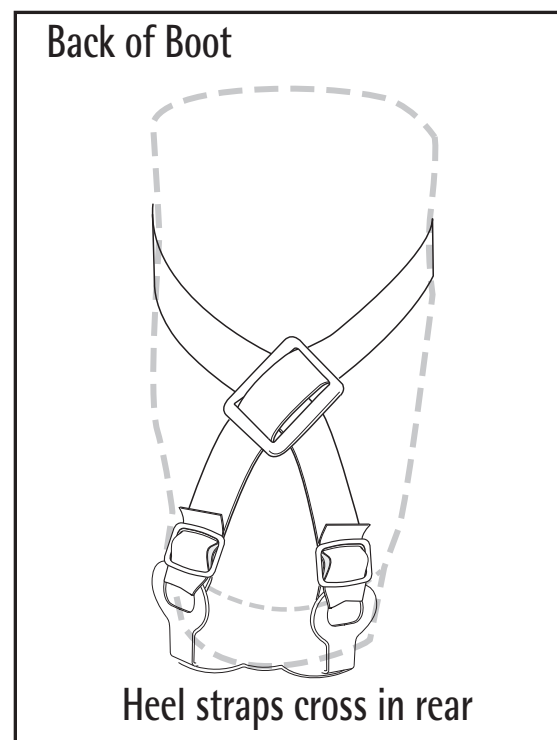
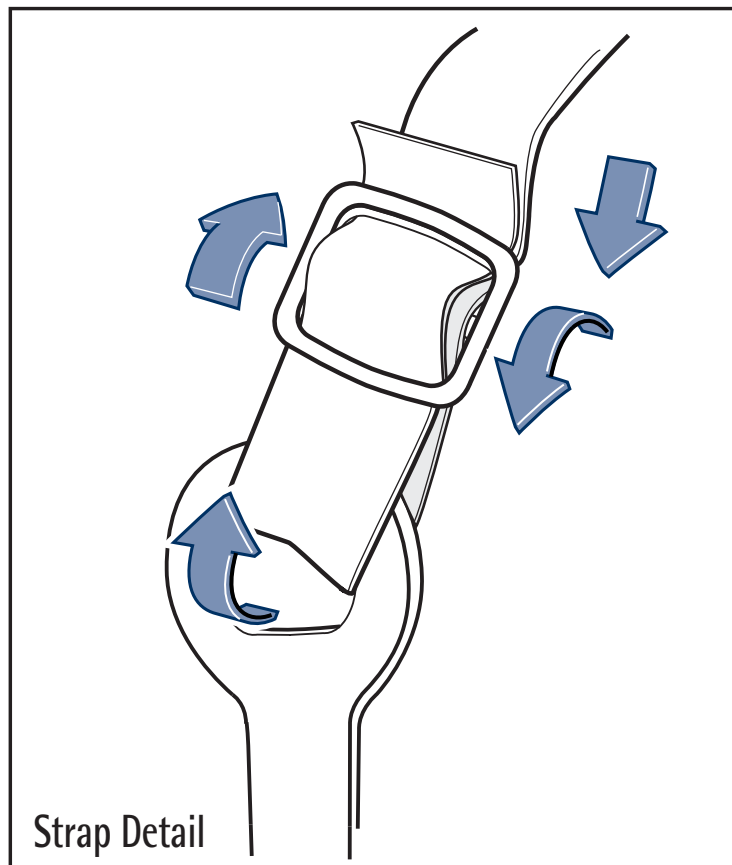
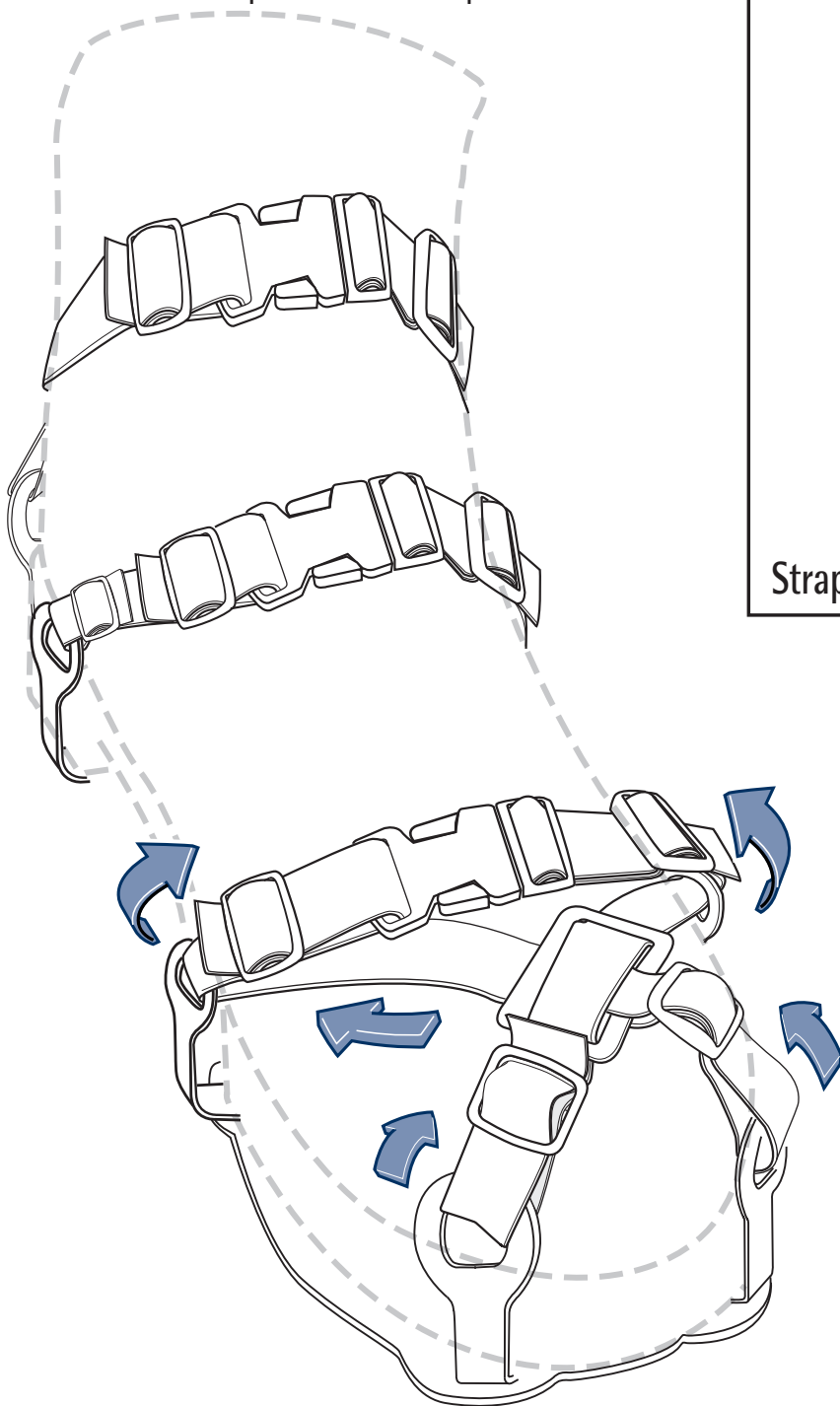


## Step 2: Attach the Strap Kits

Starting at the front of the boot, attach two pieces of Webbing from the Toe Strap kit to the Strap Brackets. See detail for threading the webbing through the Slide Lock. Use this method for attaching to the Buckles as well.

Cross the toe straps through the Separator and around to the side Strap Brackets. Thread the webbing through the Strap Brackets, through a slide lock and attach the Buckle Set to the ends.

Attach the Arch Strap Kit and Heel Strap Kit as shown



# Warranty:

## Warranty Statement

1. BML Tool & Manufacturing, Inc. (BML) warrants that the Boottrac system defined above will be free from defects in material and workmanship for a period of two (2) years from the date of purchase. However, no warranty is provided with respect to the "wear" components, such as the Points, Washers, Webbing, Buckles, Slidelocks and Spacers, once the Boottrac system has been used.
2. If BML receives timely notice of a defect which is covered under this warranty, then BML shall, at its option, either repair or replace the defective component(s). If BML is unable to repair or replace the defective component(s), then BML shall refund the purchase price.
3. BML shall have no obligation to repair or replace any component(s) until the defective component(s) has been returned to BML along with proof of the date of purchase. Use of non-BML replacement components shall void the warranty.
4. **LIMITATION OF WARRANTY.** BML makes no other warranty of any kind, whether express or implied, with respect to the Boottrac system. BML specifically disclaims any implied warranties, conditions of merchantability, satisfactory quality and fitness for a particular purpose.
5. **LIMITATION OF LIABILITY.** The remedies provided above are the customer's sole and exclusive remedies. Except for the obligations specifically set forth above, in no event shall BML or its distributors be liable for any direct, indirect, special, incidental or consequential damages, whether based on contract, tort or any other legal theory.

# Important!

Although Boottracs will provide increased traction under certain conditions, please use caution when walking on slippery surfaces. Walking on slippery surfaces is inherently dangerous. The hardened points on Boottracs may be slippery on hard surfaces such as concrete or tile floors.

Do not sharpen points. Worn points should be replaced with new Boottrac points only. Points and replacement parts can be purchased from any Boottrac dealer or by contacting BML Tool & Mfg. at (203) 259-8391

Use Boottracs at your OWN RISK.

Enjoy the outdoors and tread lightly.

Need More Info? Go to : [www.boottrac.com](http://www.boottrac.com)

Manufactured by **BML Tool & Mfg.** Fairfield Connecticut